

Hazard Map:

[Risk of Casualties (Building Collapse and Fire)]

North of City

The risk of casualties is an estimate of the number of persons killed or seriously injured from building collapse or fires due to a major earthquake. The level of risk considers the expected vulnerability to shaking combined with risk of collapse, susceptibility to fire and other key factors.

The information on the map is based on various suppositions and should be used to understand how damage could be distributed.

We hope that residents will use this information to create to a community that can withstand a major disaster.

How This Map Was Created

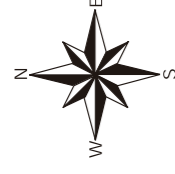
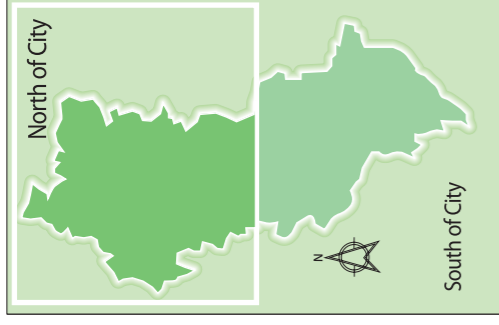
The number of expected number of casualties from full or partial building collapse was estimated using the city's 2007 register of residents.

The number of casualties due to fire, which is a comparative result of city, prefecture and national government estimates, was added to arrive at the number of casualties from building collapse and fire. Even in areas where there is a low risk of collapse, the danger from fire may increase the level of risk.

* City: Ibaraki City Disaster Assessment Survey, 1996

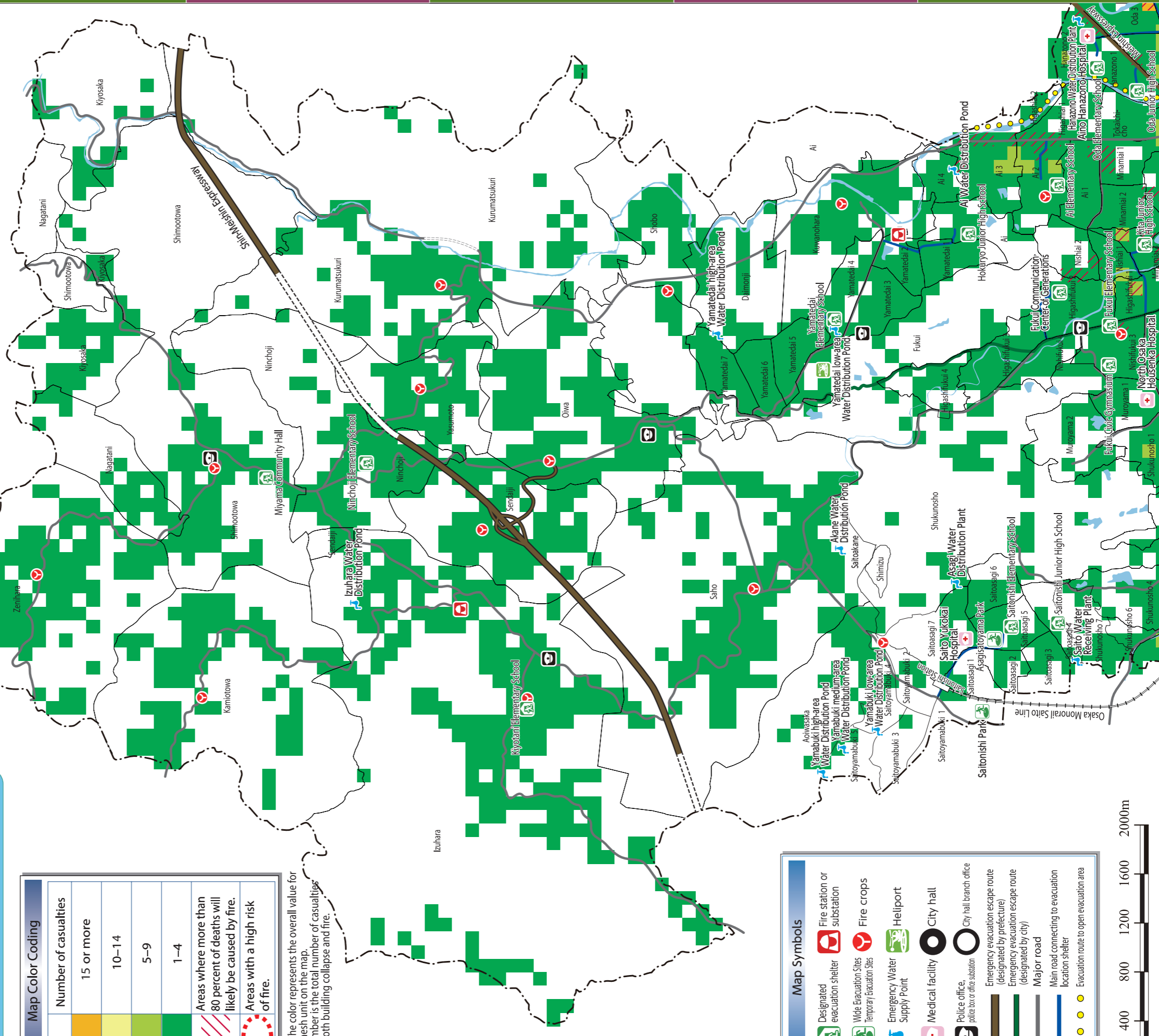
Prefecture: The Second Osaka Prefecture Earthquake Damage Premise Survey, 2006.

Country: Estimate based on the Central Disaster Prevention Council's 2006 quake model for an inland earthquake in the Chubu and Kinki regions.



Map Color Coding	
	Number of casualties
	15 or more
	10-14
	5-9
	1-4
	Areas where more than 80 percent of deaths will likely be caused by fire.
	Areas with a high risk of fire.

Note: The color represents the overall value for each mesh unit on the map. The number is the total number of casualties from both building collapse and fire.



Map Symbols	
	Designated evacuation shelter
	Fire station or substation
	Fire crops
	Helipoint
	Medical facility
	City hall
	Police office, police box or office substation
	Emergency evacuation escape route (designated by prefecture)
	Emergency evacuation escape route (designated by city)
	Major road
	Main road connecting to evacuation location shelter
	Evacuation route to open evacuation area