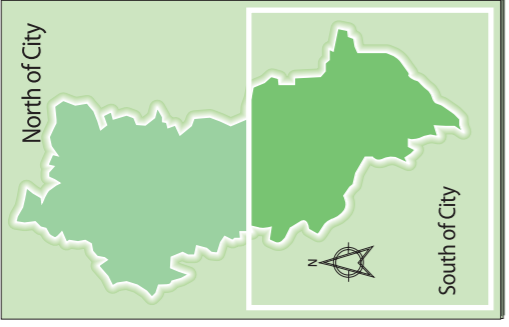
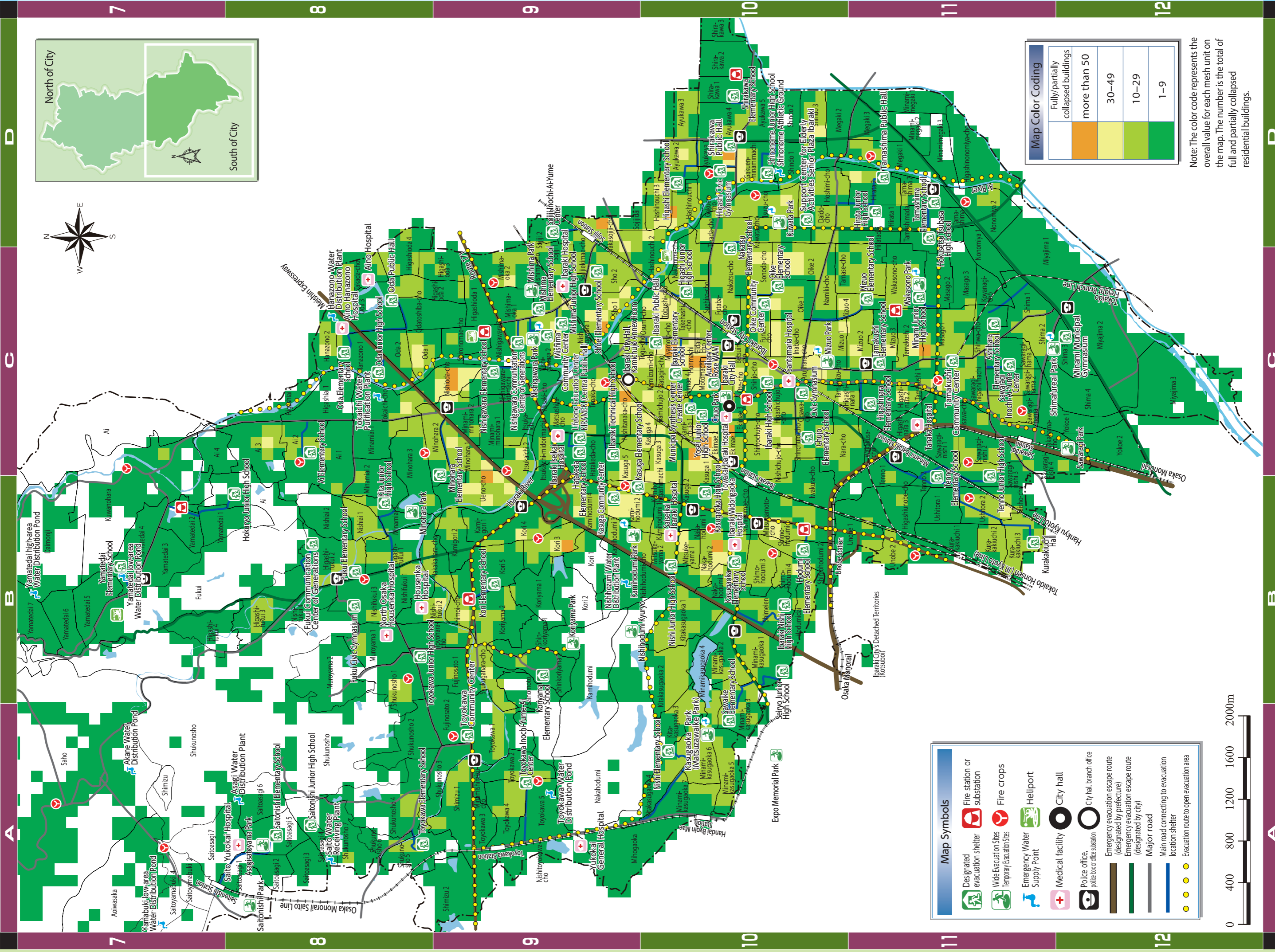


# Hazard Map:

## [Risk of Residence Collapse (Full or Partial)]

### South of City



Map Symbols	
	Designated evacuation shelter
	Fire station or substation
	Wide Evacuation Sites
	Temporary Evacuation Sites
	Emergency Water Supply Point
	Heliport
	Medical facility
	City hall
	Police office, police box or office substation
	Emergency evacuation escape route (designated by prefecture)
	Emergency evacuation escape route (designated by city)
	Major road
	Main road connecting to evacuation location shelter
	Evacuation route to open evacuation area



Map Color Coding	
	Fully/partially collapsed buildings more than 50
	30-49
	10-29
	1-9

Note: The color code represents the overall value for each mesh unit on the map. The number is the total of full and partially collapsed residential buildings.