

Block 7
Map: Vulnerability to Shaking

Map Symbols

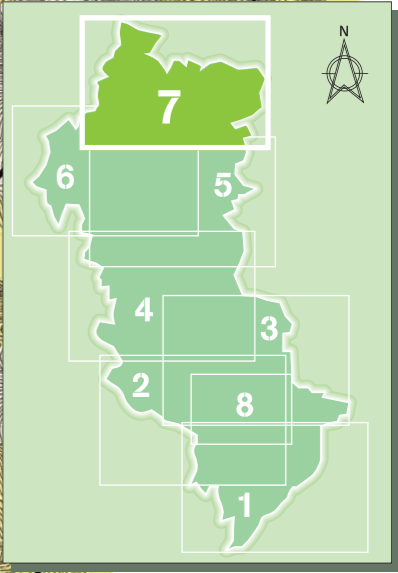
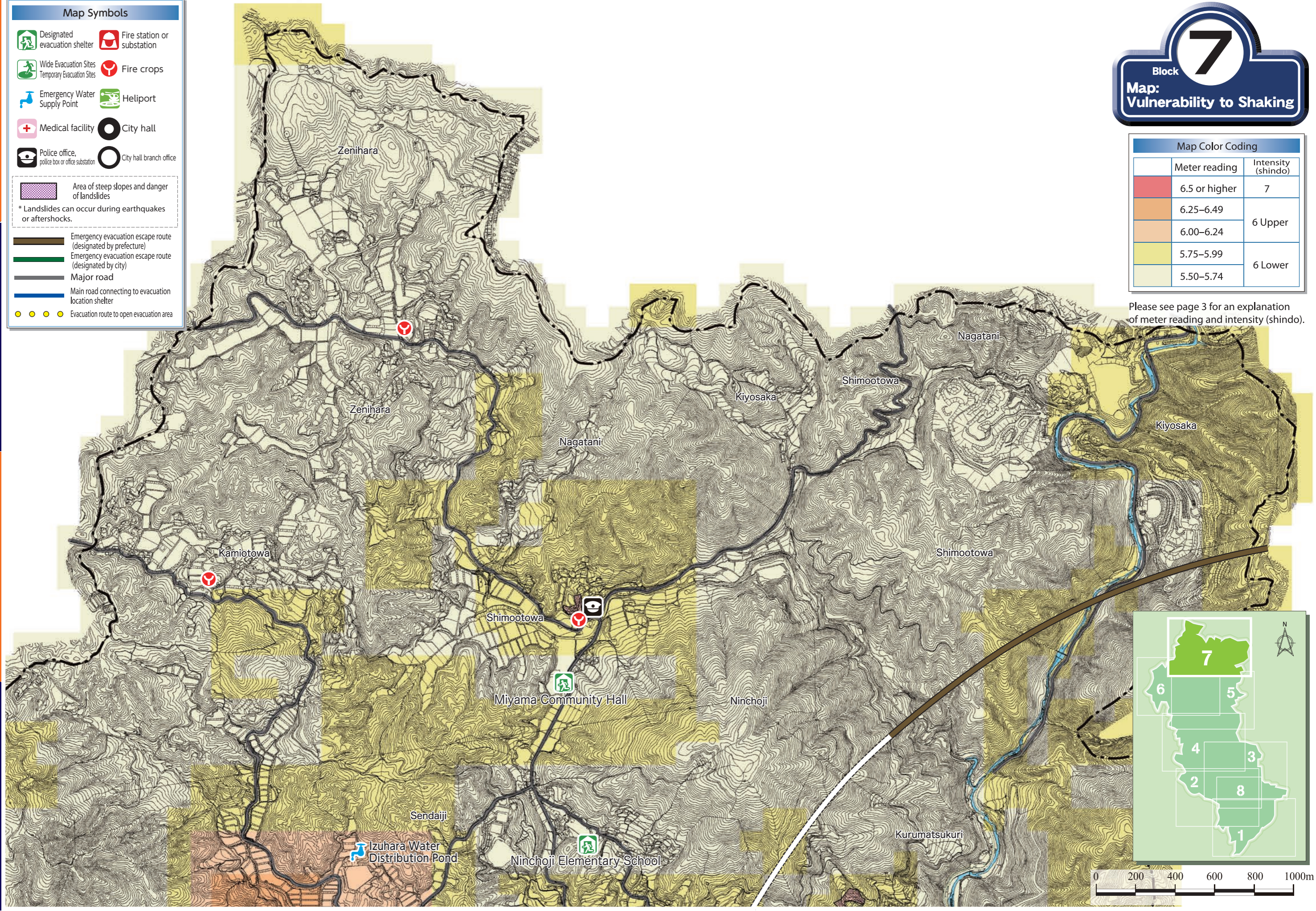
- Designated evacuation shelter
- Wide Evacuation Sites / Temporary Evacuation Sites
- Emergency Water Supply Point
- Medical facility
- Police office, police box or office substation
- Fire station or substation
- Fire crops
- Heliport
- City hall
- City hall branch office
- Area of steep slopes and danger of landslides
- Emergency evacuation escape route (designated by prefecture)
- Emergency evacuation escape route (designated by city)
- Major road
- Main road connecting to evacuation location shelter
- Evacuation route to open evacuation area

* Landslides can occur during earthquakes or aftershocks.

Map Color Coding

Meter reading	Intensity (shindo)
6.5 or higher	7
6.25-6.49	6 Upper
6.00-6.24	
5.75-5.99	6 Lower
5.50-5.74	

Please see page 3 for an explanation of meter reading and intensity (shindo).



1
2
3
4

1
2
3
4

A B C D E F