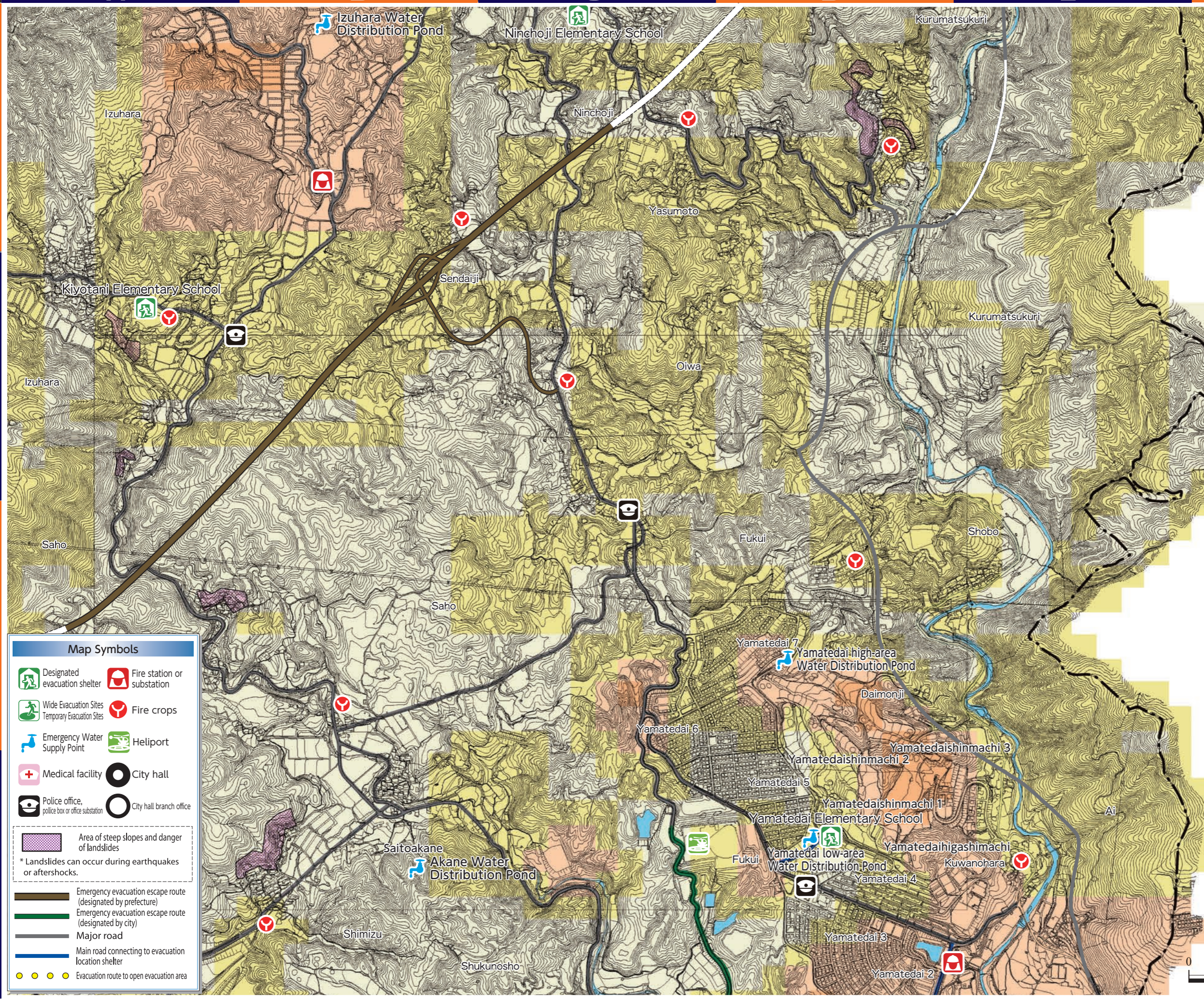


Block **5**
Map: Vulnerability to Shaking



| Map Color Coding | | |
|------------------|---------------|--------------------|
| | Meter reading | Intensity (shindo) |
| | 6.5 or higher | 7 |
| | 6.25-6.49 | 6 Upper |
| | 6.00-6.24 | |
| | 5.75-5.99 | 6 Lower |
| | 5.50-5.74 | |

Please see page 3 for an explanation of meter reading and intensity (shindo).

Map Symbols

- Designated evacuation shelter
- Wide Evacuation Sites / Temporary Evacuation Sites
- Emergency Water Supply Point
- Medical facility
- Police office, police box or office substation
- Area of steep slopes and danger of landslides
- * Landslides can occur during earthquakes or aftershocks.
- Emergency evacuation escape route (designated by prefecture)
- Emergency evacuation escape route (designated by city)
- Major road
- Main road connecting to evacuation location shelter
- Evacuation route to open evacuation area

- Fire station or substation
- Fire crops
- Heliport
- City hall
- City hall branch office

