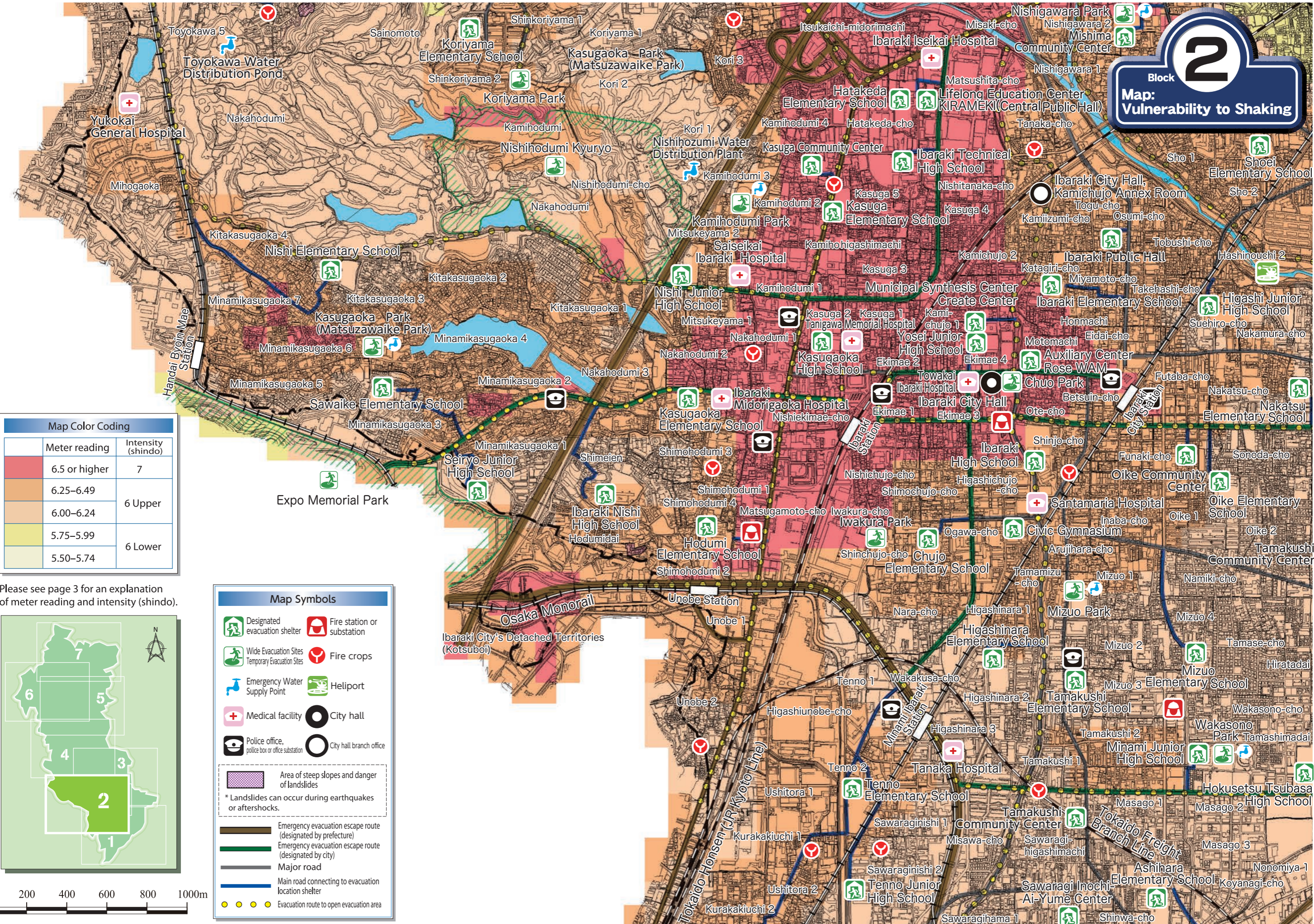
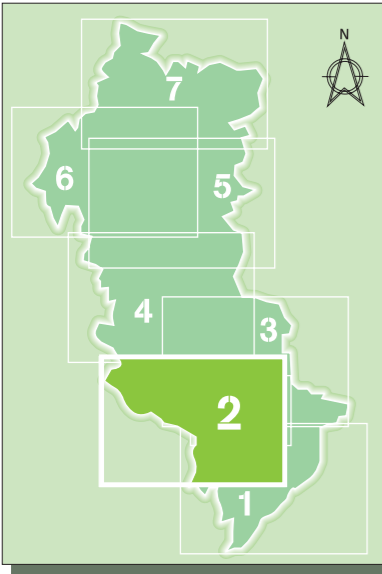


Block **2**
Map: Vulnerability to Shaking



Map Color Coding		
Meter reading	Intensity (shindo)	
6.5 or higher	7	
6.25-6.49	6 Upper	
6.00-6.24	6 Upper	
5.75-5.99	6 Lower	
5.50-5.74	6 Lower	

Please see page 3 for an explanation of meter reading and intensity (shindo).



Map Symbols

- Designated evacuation shelter
- Wide Evacuation Sites / Temporary Evacuation Sites
- Emergency Water Supply Point
- Medical facility
- Police office, police box or office substation
- Area of steep slopes and danger of landslides
- * Landslides can occur during earthquakes or aftershocks.
- Emergency evacuation escape route (designated by prefecture)
- Emergency evacuation escape route (designated by city)
- Major road
- Main road connecting to evacuation location shelter
- Evacuation route to open evacuation area
- Fire station or substation
- Fire crops
- Helipoint
- City hall
- City hall branch office

