

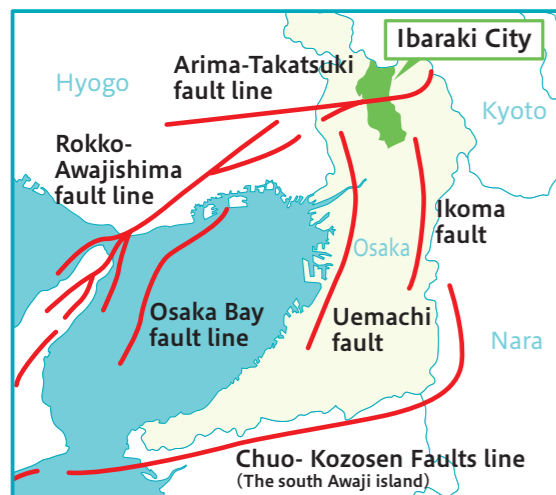
If you think, "I'm all right," you are in danger.  
**Learn from the experience of those in disaster-stricken areas.**

A Nankai Trough Earthquake, said to be the largest in western Japan, is predicted to occur with approximately 70% to 80% probability within the next 30 years. It would not be surprising if it happened at any time.

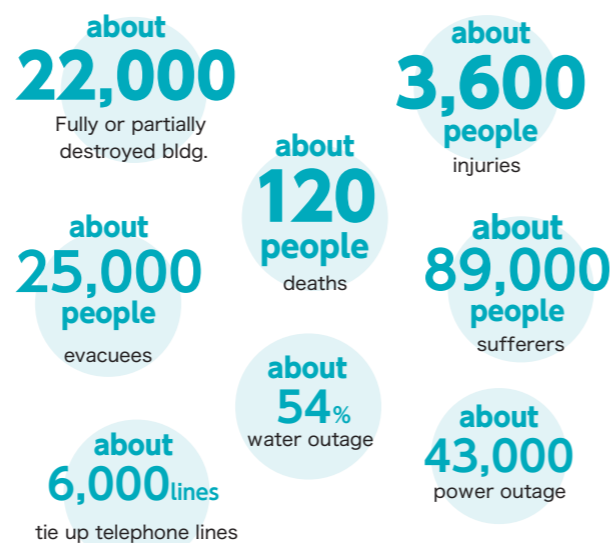
※Based on the announcement by the Headquarters for Earthquake Research Promotion, Cabinet Office, Government of Japan. As of January 1, 2023

**Active faults in and around Ibaraki City**

Underneath the center of the city lie the Arima-Takatsuki fault line and the Ikoma and Ueno faults run around the circumference of the city.



**Assume the largest damage in figures**



Source: Ibaraki City regional disaster prevention plan (Amendment in February 2023)

Assume the largest damage when an earthquake (M7.5±0.5, with an intensity of less than 5 to 7) takes place within the Arima-Takatsuki fault zone.

**It is essential to prepare for an emergency on a daily basis.**

Please check such things as the safety of your house, emergency supplies and evacuation routes.

It is important to discuss disaster prevention with your family and neighbors.

※Please read "Emergency Action Now!" so that you can act immediately when disaster strikes.



In the event of an earthquake, what were the things that you should have prepared in advance?

- ▶▶▶ No.1 Drink water
- ▶▶▶ No.2 Flashlight
- ▶▶▶ No.3 Emergency food

Source: Questionnaires of the disaster victims after the great Hanshin-Awaji earthquake (conducted by the Fire Department of Kobe City)

**Learn from experience**

**That day, That time, That place**  
**The voices from the affected areas**

The Great Hanshin-Awaji Earthquake (in 1995) and the Great East Japan Earthquake (in 2011) took the lives of many people and inflicted enormous damages. In recent years, natural disasters, such as torrential rain caused by unusual weather and flooding or landslides caused by typhoons, have occurred in many places across the nation. We have collected the voices of victims who experienced those earthquakes in the past.

**At the time of disaster**

I learned my husband was safe after three days.

I should have written down his phone number.

The East Japan earthquake (Female)

**No way! Why me?**

I couldn't act fast enough.  
 The Hanshin-Awaji Earthquake (Male)

**When evacuating.**

It was far to evacuation shelter.

I should have confirmed the location in advance.

The East Japan earthquake (Male)

**In the evacuation life**

My son has any food allergies, so he could not eat most of the supplies.

The Hanshin-Awaji Earthquake (Female)

Neighbors gave me information in writing.

It is important to work in close cooperation.

The East Japan earthquake (Hearing-impaired female)

As I wrote down the name of medicine,

I could take the same prescribed medication.

The East Japan earthquake (Asthma patient Male)

