

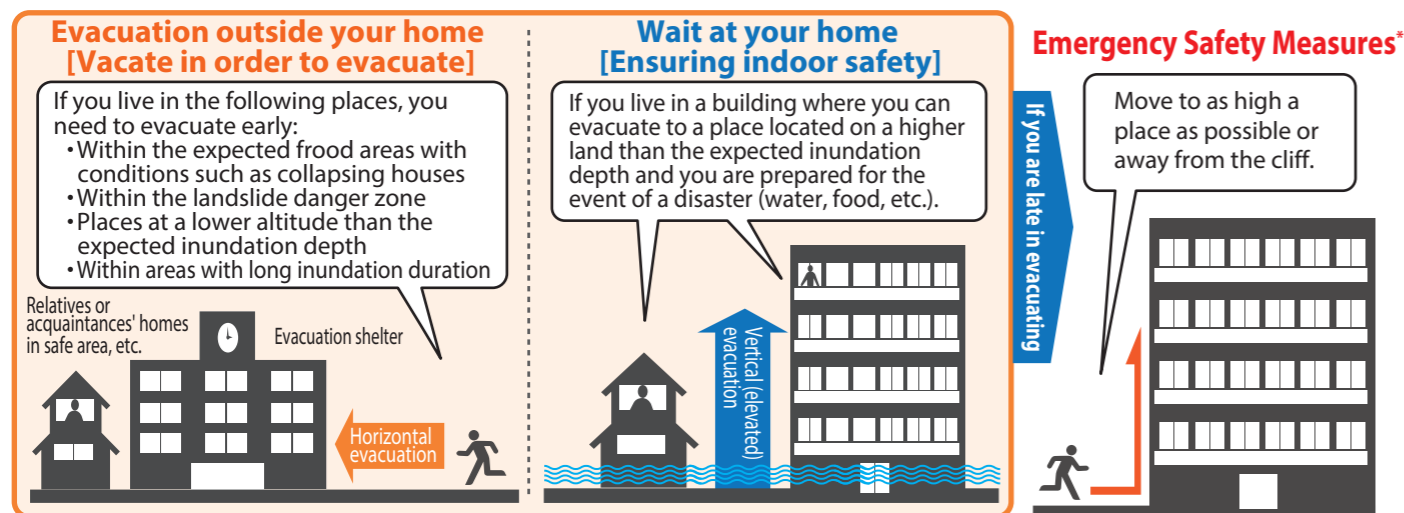


2. Think about where to evacuate

① Know how to evacuate (distributed evacuation, etc.)

Types of evacuation measures

The types of the evacuation measures are as follows. Take appropriate evacuation measures depending on the situation.



* Emergency safety measures is a measure to take when a disaster occurs or is imminent. This is the next best measure that can be taken by residents who did not evacuate in time because they cannot vacate for some reason. Therefore, it is not always possible to take this measure safely, and even if this measure is taken, it is not always possible to ensure personal safety.

Distributed evacuation

To avoid the congestion at the evacuation sites, it is also important to take measures such as "distributed evacuation" according to the circumstances.

Stay at home

- The risk of floods and landslides at your home is low.
- You can evacuate to a place located on land higher than the expected inundation depth.
- You live on an upper floor of an apartment or condominium.

Ensure indoor safety
(Move to a safe place in your home)



Evacuate to homes of relatives, acquaintance, etc.

- The risk of floods and landslides at homes of relatives, acquaintance, etc., is low.
- You have relatives or acquaintances to whose home you can evacuate.

Shelter with relatives or acquaintance
(Make sure to keep in touch with relatives and acquaintance on a daily basis)



Evacuate to an evacuation shelter

- The risk of floods and landslides at your home is high.
- You have no relatives or acquaintances to whose home you can evacuate.

Evacuate to an evacuation shelter set up by Ibaraki City



Evacuation centers and evacuation shelters designated by Ibaraki City

Ibaraki City has established "designated evacuation shelters and designated emergency evacuation shelters" according to the type of disaster (flood, landslide disaster, typhoon) and conditions (rainfall and river conditions). Check the evacuation sites that will be opened in the event of a flood or landslide on pages 66 and 67.



Designated evacuation shelter and designated emergency evacuation shelter

These are evacuation shelters to escape danger in the event of a disaster or the possibility of a disaster. Ibaraki City will specify each type of disaster, and will open shelters sequentially according to circumstances of each target area for evacuation information issuance. Residents who cannot return to their homes due to a disaster will live as evacuees for a certain period of time. Such residents will move to designated evacuation shelters after the disaster.



Designated evacuation shelter

These are facilities for residents who have evacuated due to the risk of a disaster or who cannot return to their homes due to a disaster, where they can live for a certain period of time. These centers are designated by Ibaraki City, regardless of the type of disaster. (*These evacuation centers will not be set up as designated emergency evacuation shelters in the event of a flood or landslide)

Evacuation shelters set up for each disaster type



These evacuation shelters will be set up when the risk of **flooding** increases and alert level 3 "evacuation of the elderly, etc." or higher is issued.
(*These evacuation centers are set up for upstream of the Ai River, downstream of the Ai River, the Ibaraki River, the Taisho River, the Yodo River, and the Nyoze River)



These evacuation shelters will be set up when the risk of **landslides** increases and alert level 3 "evacuation of the elderly, etc." or higher is issued.
(*Set up in the area north of National Highway 171 and south of National Highway 171)



Facility for **evacuation shelters in the event of typhoons**. Such facilities will be temporarily set up for those who wish to evacuate in advance (voluntary evacuation) when there is a possibility of a typhoon approaching Ibaraki City.

Check the "Status of evacuation shelters in Ibaraki City" for the status of evacuation centers and evacuation shelters. You can also check the status of evacuation centers by pressing the "d" button on the TV remote.

Ibaraki City Evacuation Center Setup Status



Support for the elderly and disabled people in the community

It may take the elderly and disabled people longer to obtain information in the event of a disaster, or it may be difficult for them to take immediate evacuation measures. Even in past disasters, the elderly aged 65 and over account for the majority of victims. However, the situation is different for each person, and it is not easy to provide support when the situation actually occurs. Think about how you can support such people in your family and the community while talking to each other and communicating with each other on a daily basis.

