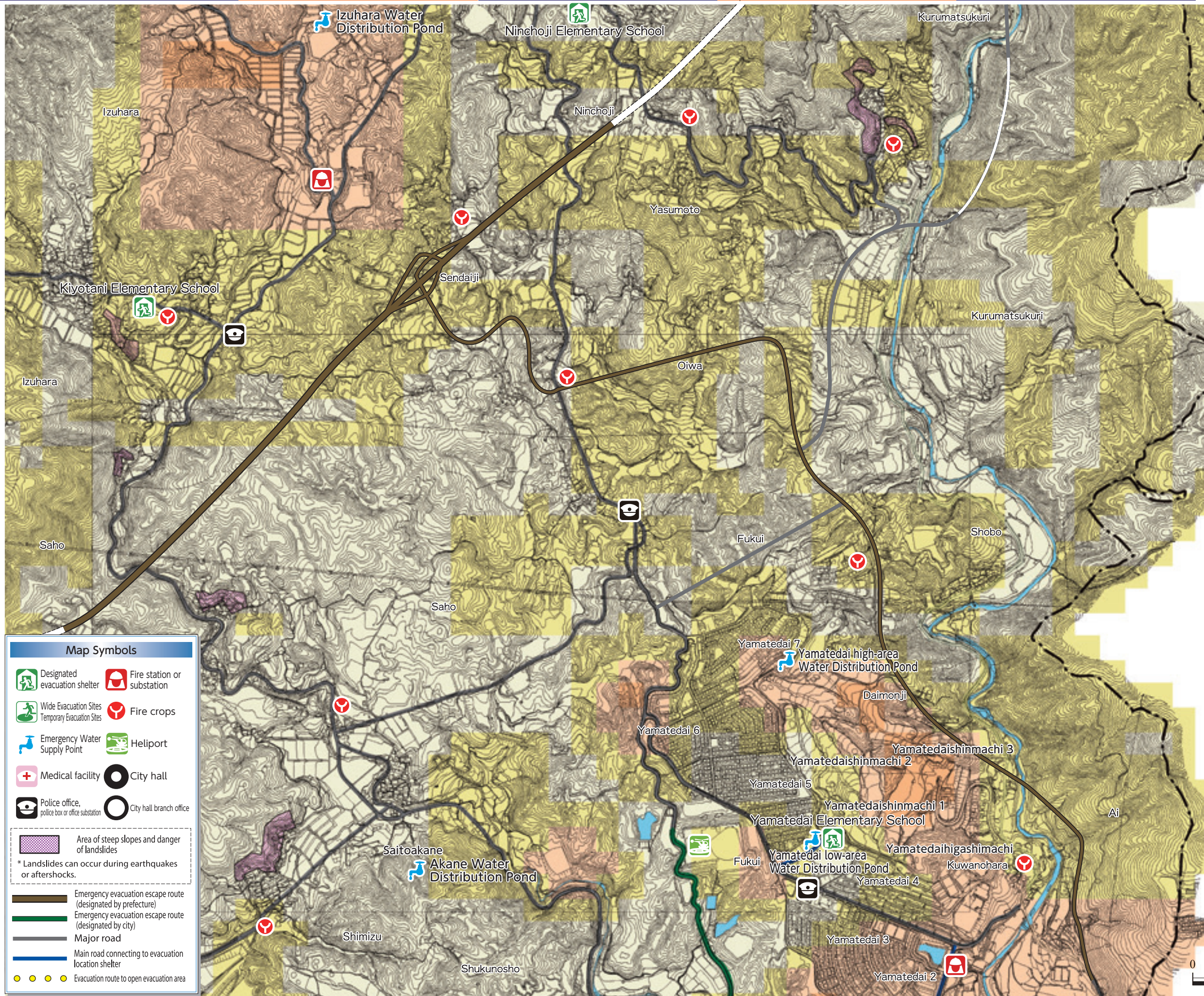
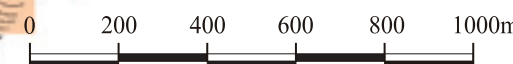
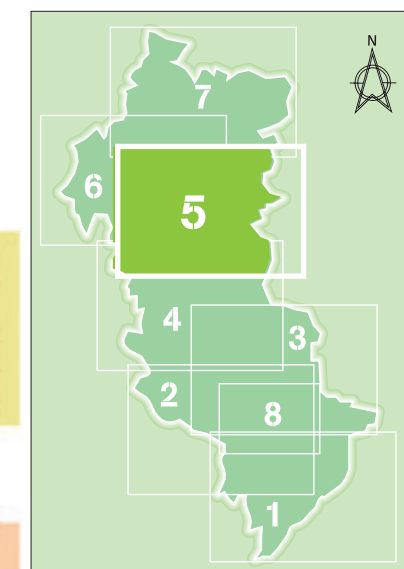


Block **5**
Map:
Vulnerability to Shaking

Map Color Coding		
	Meter reading	Intensity (shindo)
	6.5 or higher	7
	6.25-6.49	6 Upper
	6.00-6.24	
	5.75-5.99	6 Lower
	5.50-5.74	

Please see page 3 for an explanation of meter reading and intensity (shindo).



Map Symbols

	Designated evacuation shelter		Fire station or substation
	Wide Evacuation Sites Temporary Evacuation Sites		Fire crops
	Emergency Water Supply Point		Heliport
	Medical facility		City hall
	Police office, police box or office substation		City hall branch office

Area of steep slopes and danger of landslides
* Landslides can occur during earthquakes or aftershocks.

	Emergency evacuation escape route (designated by prefecture)
	Emergency evacuation escape route (designated by city)
	Major road
	Main road connecting to evacuation location shelter
	Evacuation route to open evacuation area